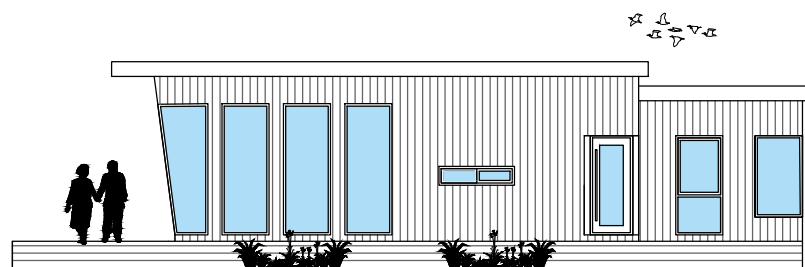
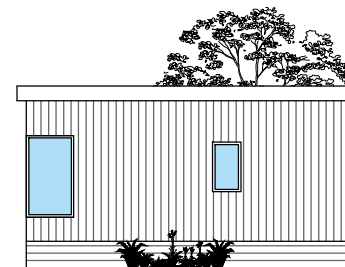


End Elevation (Lounge)



Front Elevation



End Elevation (Bedroom)



Rear Elevation

Elevations Are For Illustrative Purposes Only



THE VIEWPOINT

13.716 x 6.781m
45' x 22'3"

LOUNGE	5.44 x 6.62m
KITCHEN	3.05 x 3.66m
BEDROOM 1	3.05 x 2.90m
EN SUITE 1	2.72 x 2.46m
BEDROOM 2	3.15 x 3.45m
EN SUITE 2	1.54 x 2.90m
HALL	1.15 x 2.93m

SCALE 1:50 @A3

COPYRIGHT NOTICE:

THIS DRAWING AND THE INFORMATION CONTAINED WITHIN, IS THE PROPERTY OF TINGDENE HOMES LTD. IT MAY NOT BE USED, TRANSMITTED OR REPRODUCED, IN WHOLE OR IN PART, WITHOUT PRIOR WRITTEN CONSENT FROM TINGDENE HOMES LTD. COPYRIGHT

PLEASE BE ADVISED SIZES SHOWN ON DRAWING ARE GUIDELINES ONLY

