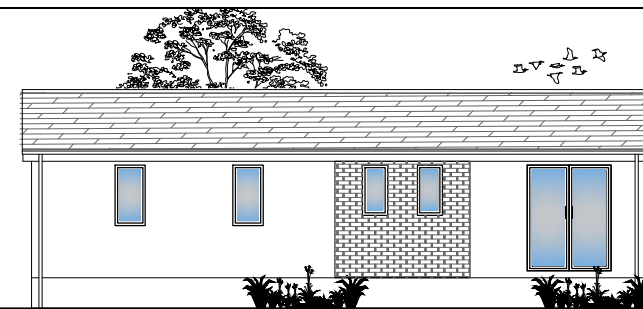


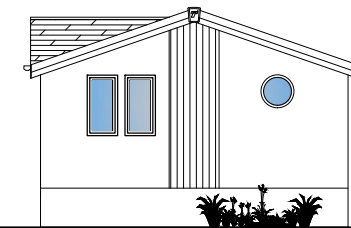
FRONT ELEVATION



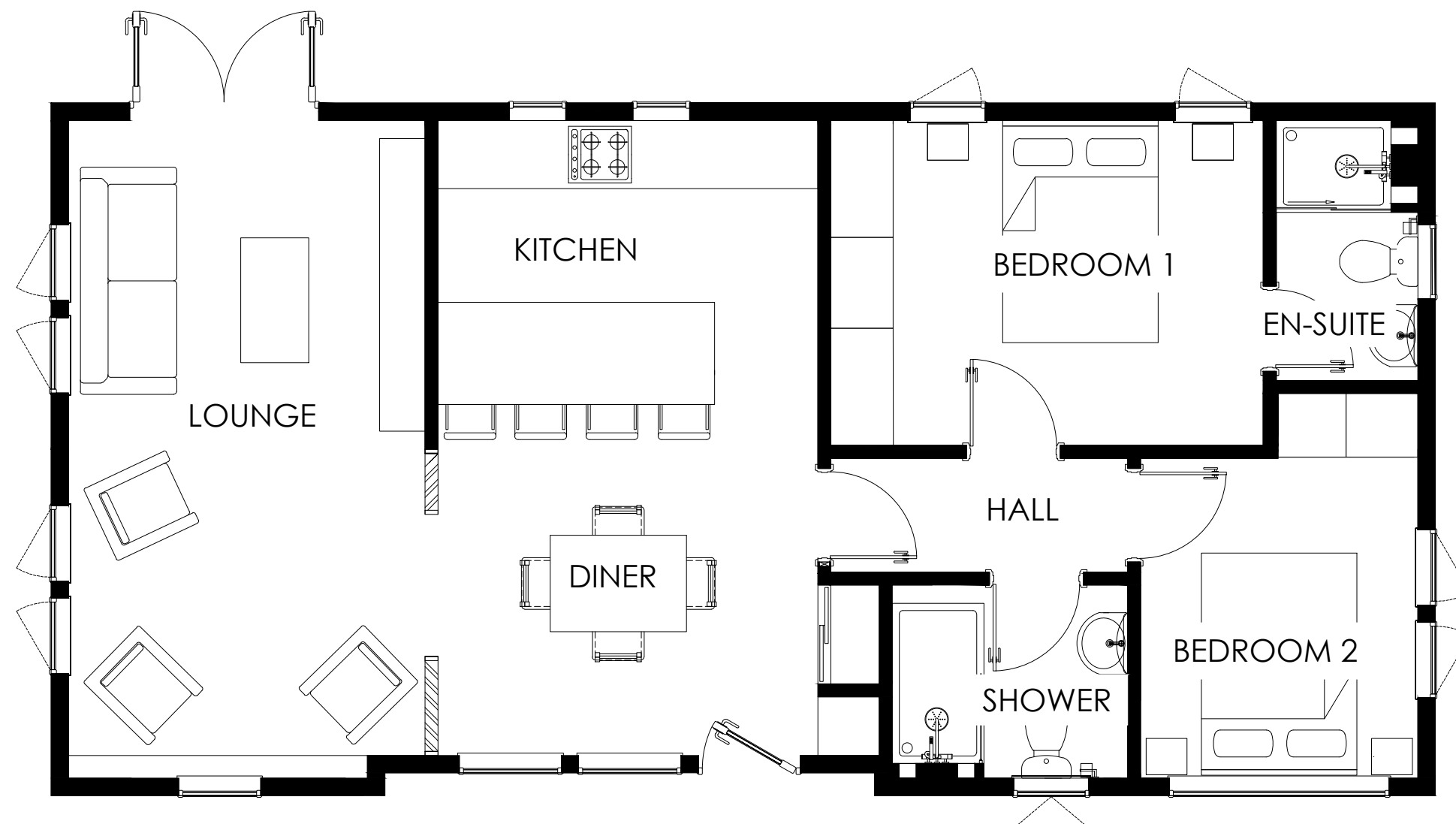
END ELEVATION (LOUNGE)



REAR ELEVATION



END ELEVATION (BEDROOM)



OVERSTONE

12.192 x 6.096m
40' x 20'

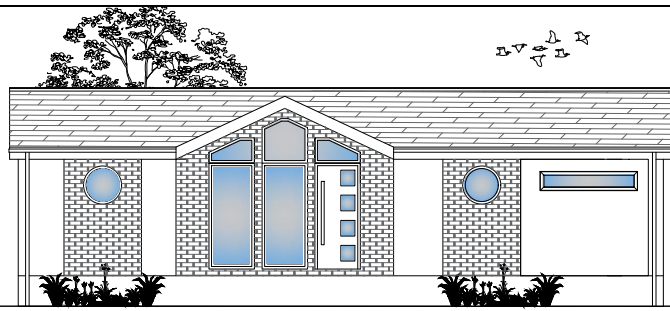
LOUNGE	3.14 x 5.79m
KITCHEN	3.14 x 2.89m
DINER	4.05 x 2.89m
BEDROOM 1	3.81 x 2.67m
ENSUITE	1.21 x 2.24m
BEDROOM 2	2.44 x 3.37m
SHOWER	2.08 x 1.70m
HALL	2.61 x 0.90m

SCALE 1:50 @A3

COPYRIGHT NOTICE:
THIS DRAWING AND THE INFORMATION CONTAINED WITHIN, IS THE PROPERTY OF TINGDENE HOMES LTD. IT MAY NOT BE USED, TRANSMITTED OR REPRODUCED, IN WHOLE OR IN PART, WITHOUT PRIOR WRITTEN CONSENT FROM TINGDENE HOMES LTD. COPYRIGHT

PLEASE BE ADVISED SIZES SHOWN ON DRAWING ARE GUIDELINES ONLY

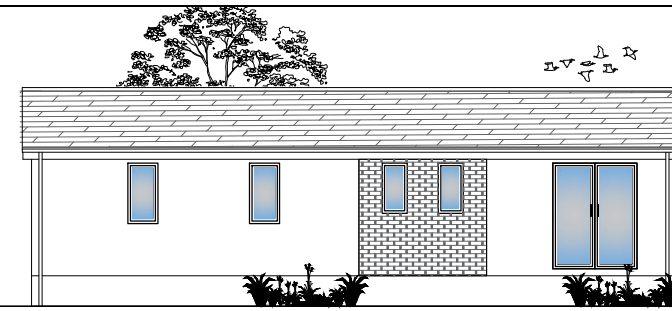




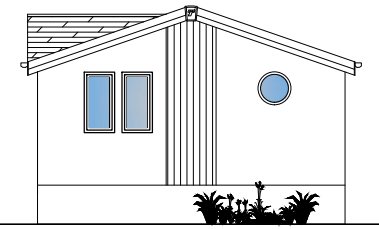
FRONT ELEVATION



END ELEVATION (LOUNGE)



REAR ELEVATION



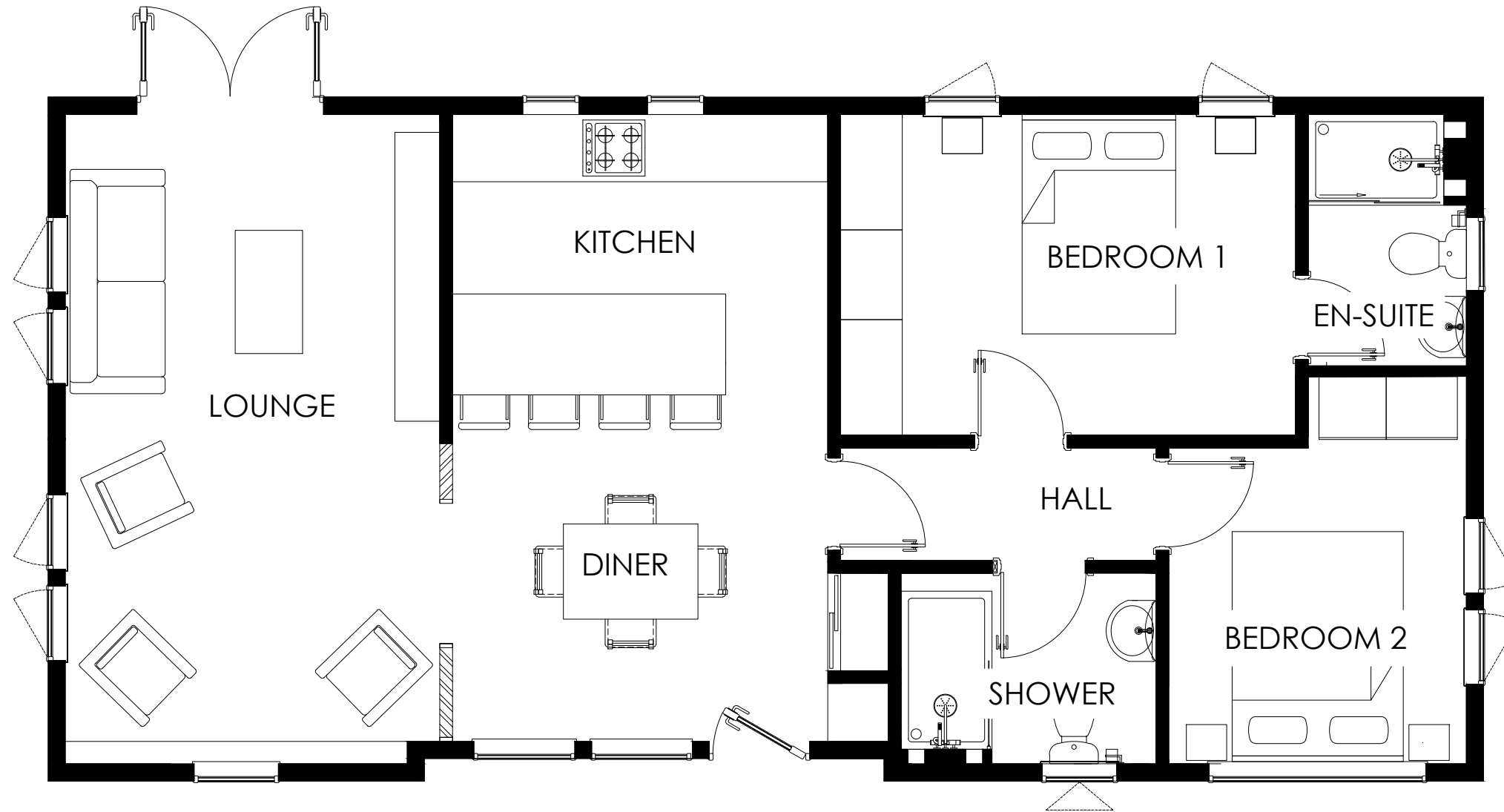
END ELEVATION (BEDROOM)



OVERSTONE

12.802 x 6.096m
42' x 20'

LOUNGE	3.34 x 5.79m
KITCHEN	3.34 x 2.89m
DINER	3.88 x 2.89m
BEDROOM 1	4.85 x 2.67m
ENSUITE	1.41 x 2.27m
BEDROOM 2	2.63 x 3.37m
SHOWER	2.28 x 1.70m
HALL	2.27 x 0.90m

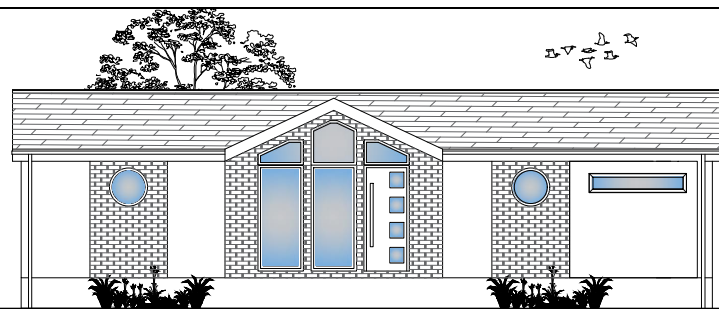


SCALE 1:50 @A3

COPYRIGHT NOTICE:
THIS DRAWING AND THE INFORMATION CONTAINED WITHIN, IS THE PROPERTY OF TINGDENE HOMES LTD. IT MAY NOT BE USED, TRANSMITTED OR REPRODUCED, IN WHOLE OR IN PART, WITHOUT PRIOR WRITTEN CONSENT FROM TINGDENE HOMES LTD. COPYRIGHT

PLEASE BE ADVISED SIZES SHOWN ON DRAWING ARE GUIDELINES ONLY

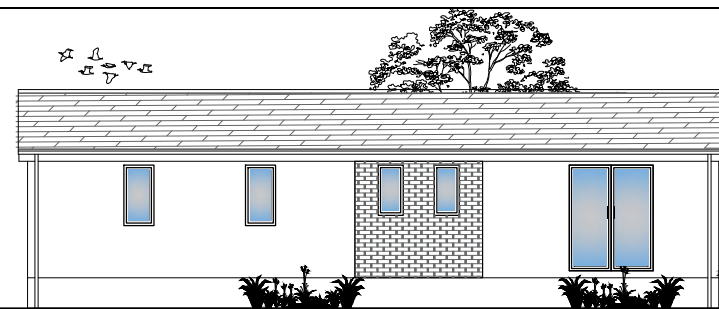




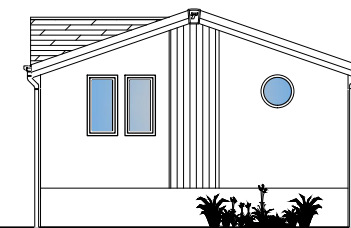
FRONT ELEVATION



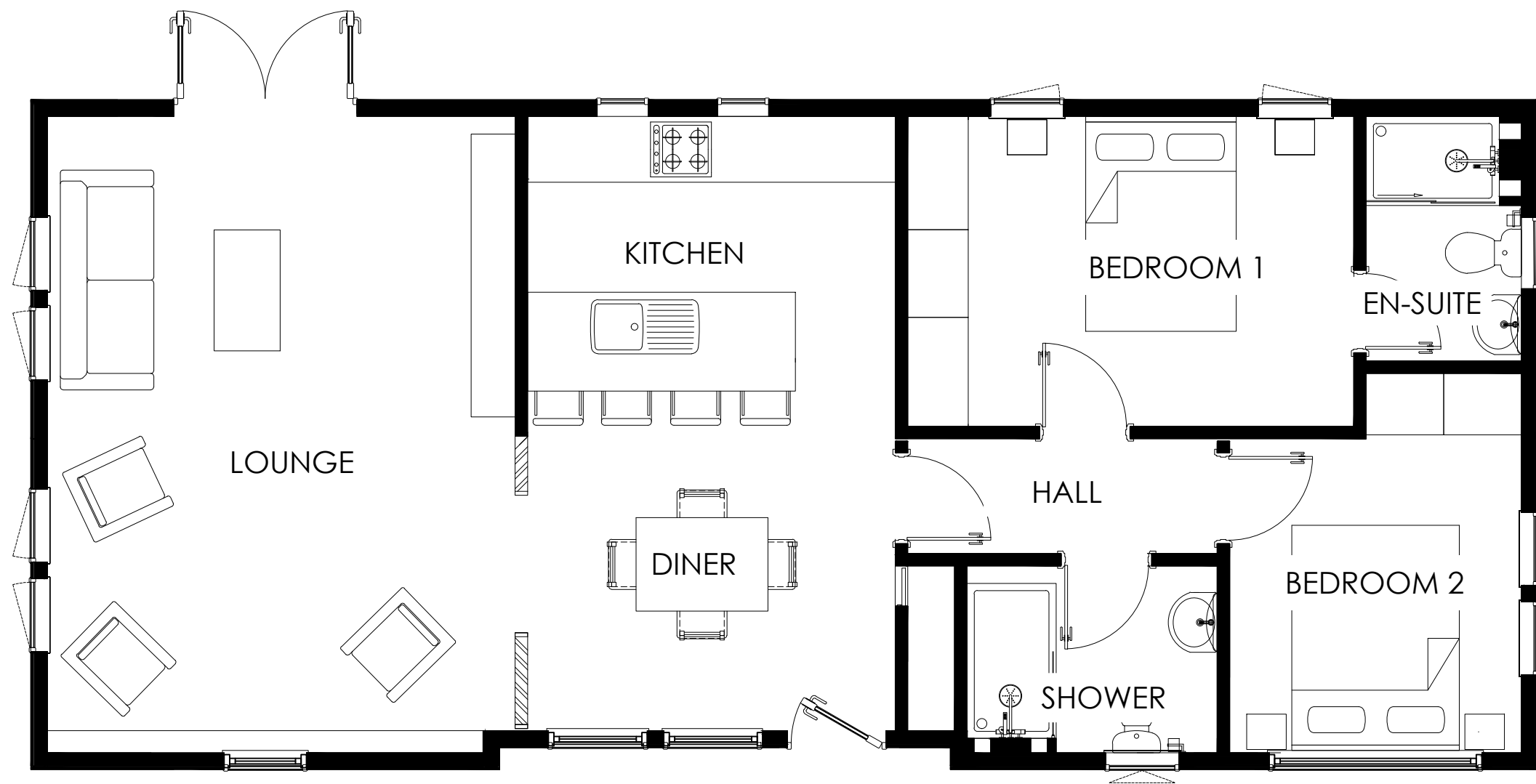
END ELEVATION (LOUNGE)



REAR ELEVATION



END ELEVATION (BEDROOM)



OVERSTONE

13.716 x 6.096m
45' x 20'

LOUNGE	4.25 x 5.79m
KITCHEN	3.35 x 2.89m
DINER	3.35 x 2.89m
BEDROOM 1	4.06 x 2.67m
ENSUITE	1.41 x 2.24m
BEDROOM 2	2.65 x 3.37m
SHOWER	2.27 x 1.70m
HALL	2.81 x 0.90m

SCALE 1:50 @A3

COPYRIGHT NOTICE:
THIS DRAWING AND THE INFORMATION CONTAINED WITHIN, IS THE PROPERTY OF TINGDENE HOMES LTD. IT MAY NOT BE USED, TRANSMITTED OR REPRODUCED, IN WHOLE OR IN PART, WITHOUT PRIOR WRITTEN CONSENT FROM TINGDENE HOMES LTD. COPYRIGHT

PLEASE BE ADVISED SIZES SHOWN ON DRAWING ARE GUIDELINES ONLY

